



# COMUNE DI CIRO' MARINA

## PROVINCIA DI CROTONE

---

**OGGETTO:** RISTRUTTURAZIONE STRUTTURE SPORTIVE  
"SPOGLIATOIO E SISTEMAZIONE ESTERNA CAMPO DI  
CALCIO IN TERRA BATTUTA".

**IL R.U.P.**

---

**IL PROGETTISTA**

FIRMATO ARCH. LUIGI BAFFA

---

**DATA**

APRILE 2017

**RIF.**

---

**TAVOLA**

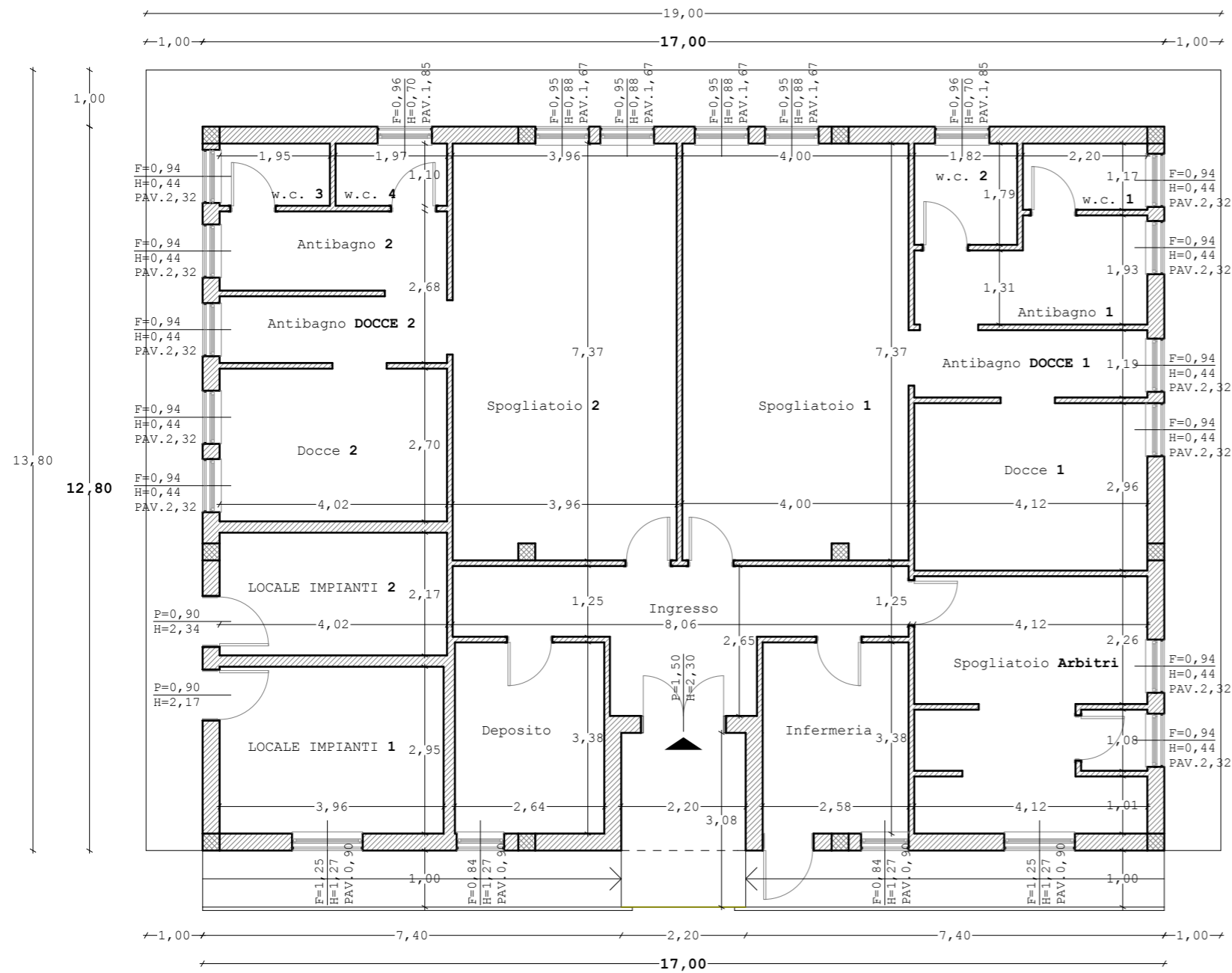
5

**SCALA**

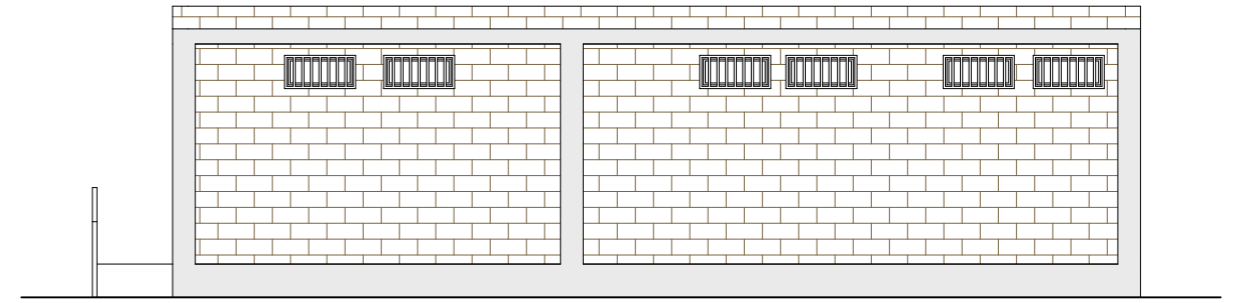
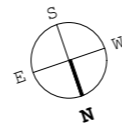
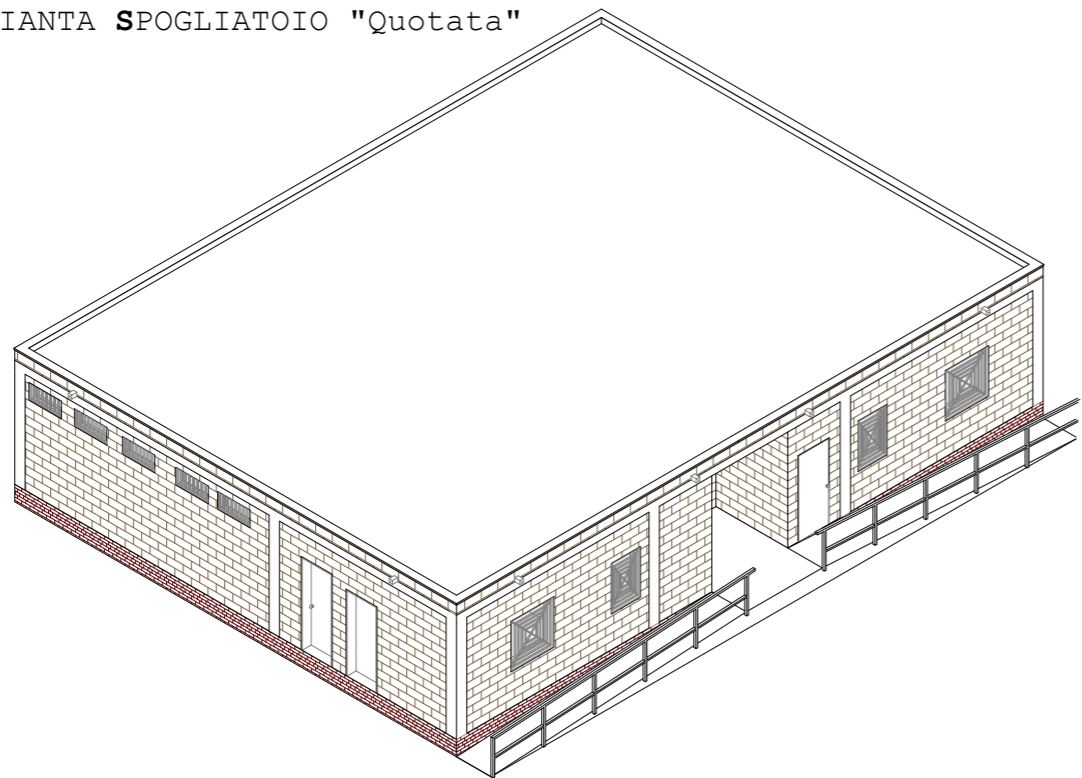
1:100

*Spazio Riservato agli uffici Comunali*

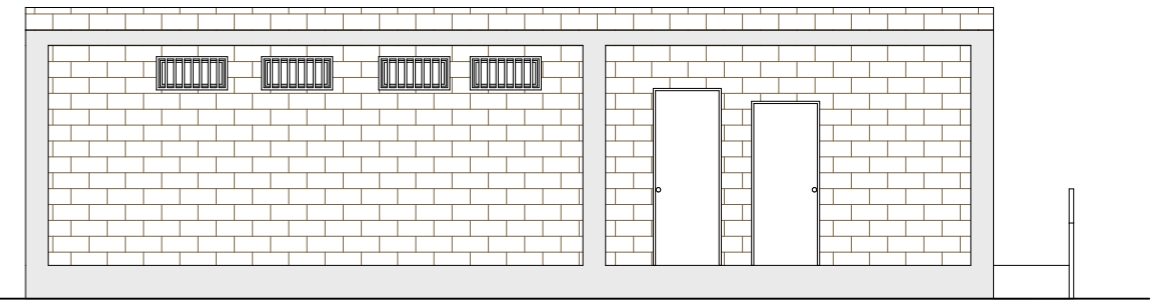
PIANTA-PROSPETTI-SEZIONI  
**STATO DI PROGETTO**



PIANTA SPOGLIATOIO "Quotata"



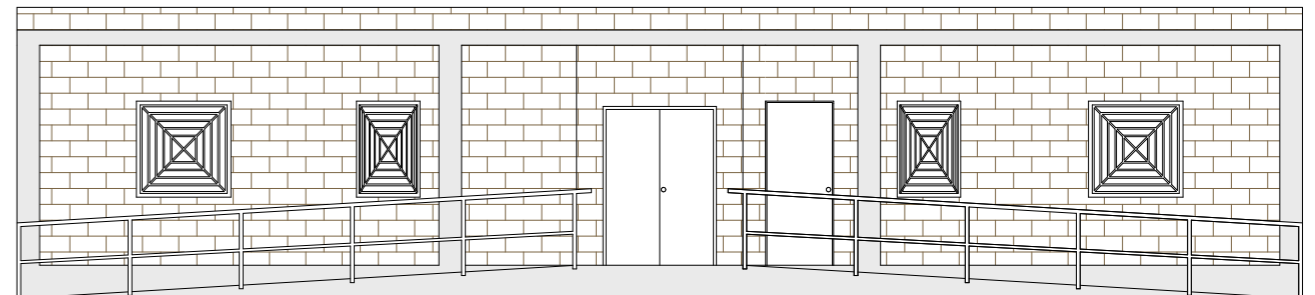
PROSPETTO OVEST SCALA 1:50 PARTE IN C.A. 10,81 m<sup>2</sup>



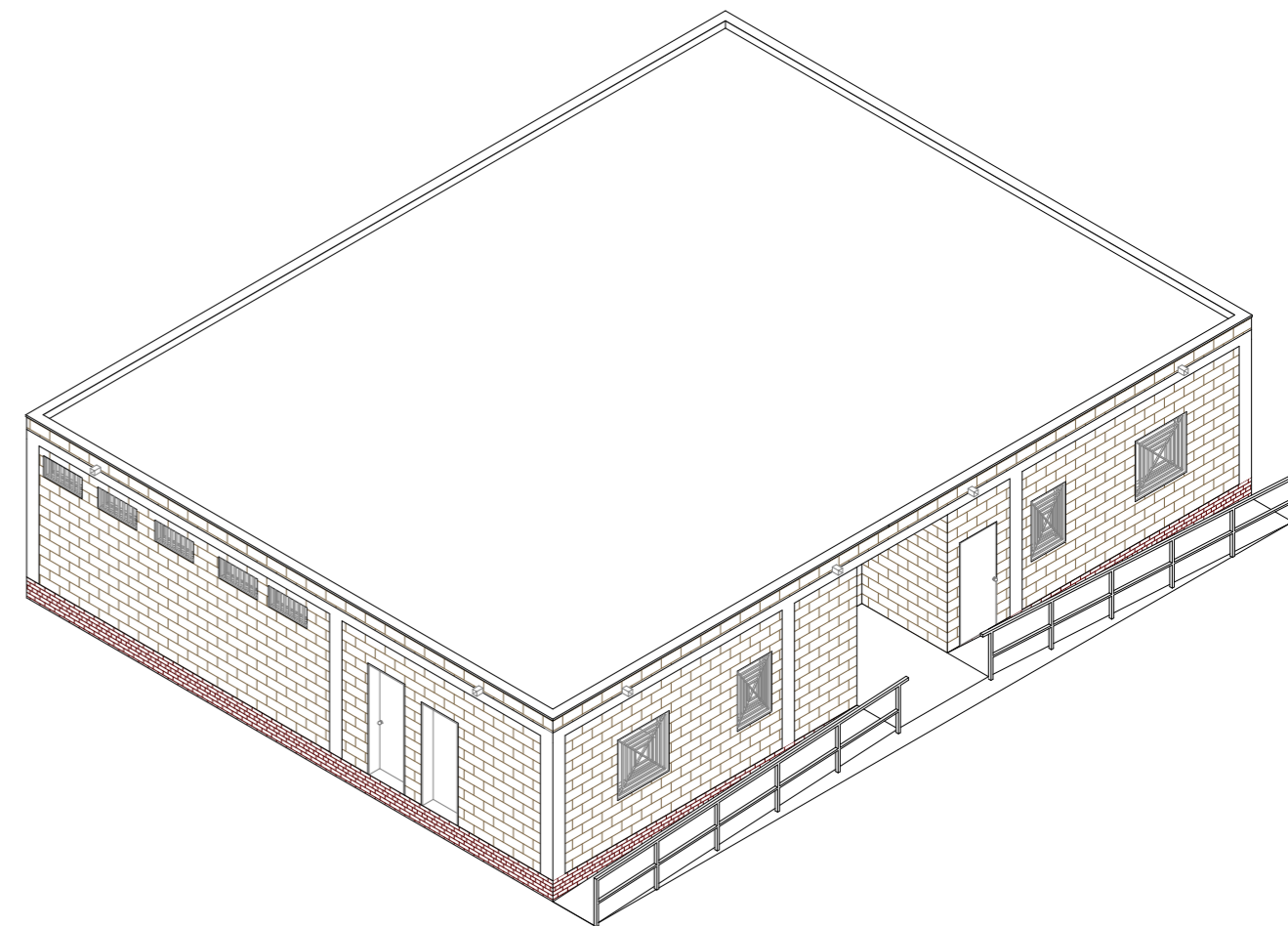
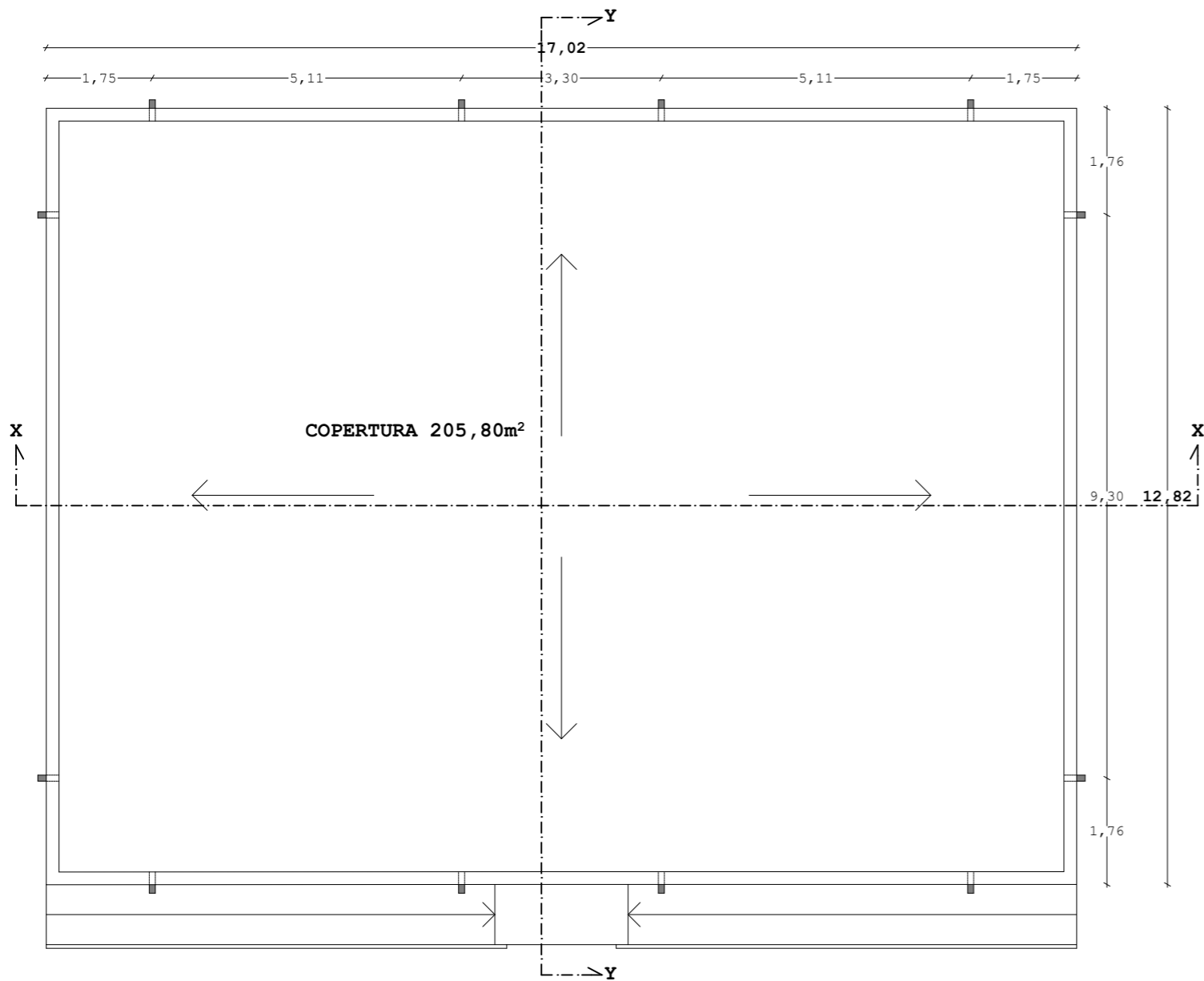
PROSPETTO EST SCALA 1:50 PARTE IN C.A. 10,81 m<sup>2</sup>



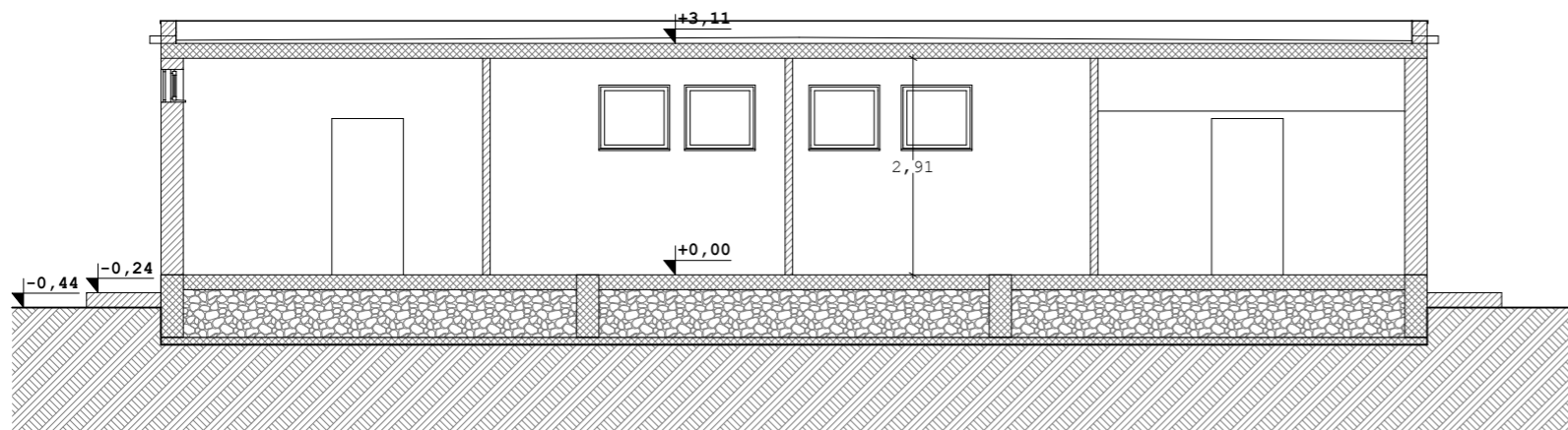
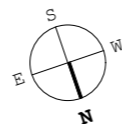
PROSPETTO SUD SCALA 1:50 PARTE IN C.A. 14,37 m<sup>2</sup>



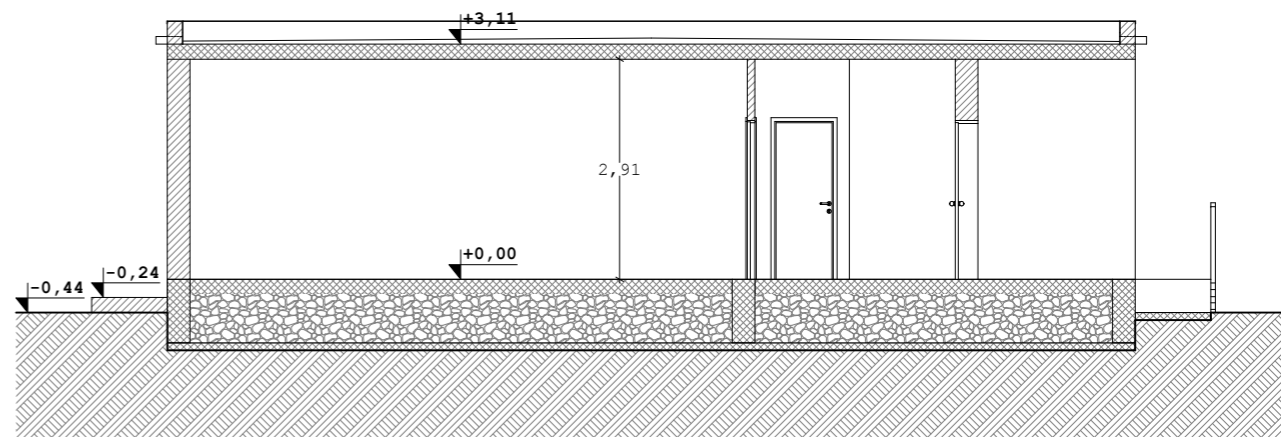
PROSPETTO NORD SCALA 1:50 PARTE IN C.A. 14,37 m<sup>2</sup>



PIANTA COPERTURA SCALA 1:50 ■ PLUVIALI



SEZIONE X-X SCALA 1:50



SEZIONE Y-Y SCALA 1:50